

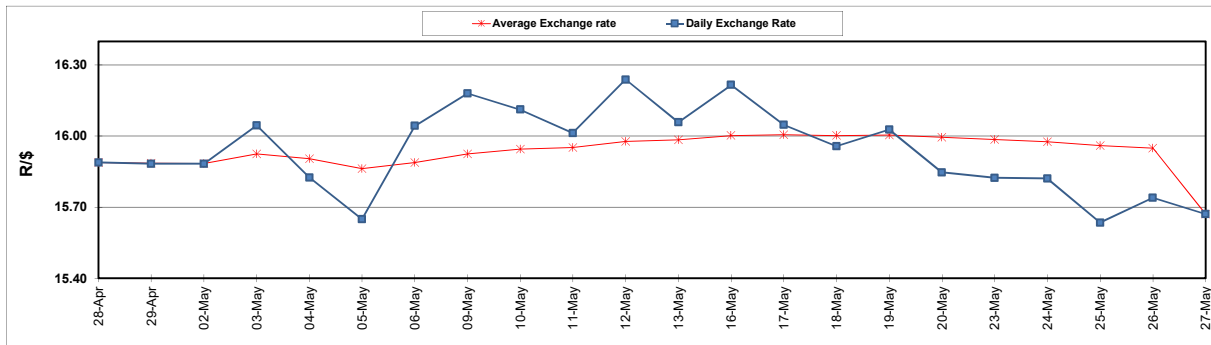
	PETROL 95 ULP	PETROL 93 ULP & LRP	DIESEL 0.05%	DIESEL 0.005%	ILL. PAR.
GAUTENG PUMP PRICE (SA c/l) AS FROM 01/06/2022	2,417.000	2,394.000	-	-	-
WHOLESALE PRICE (SA c/l) AS FROM 01/06/2022	-	-	2,309.440	2,322.840	1,820.288
SINGLE NATIONAL MAXIMUM RETAIL PRICE	-	-	-	-	2,402.000
BASIC FUEL PRICE - 27/05/2022 (SA c/l)	1,611.842	1,557.883	1,565.866	1,577.565	1,591.847
PRESS RELEASE CONTRIBUTION TO BFP 27/05/2022 - 27/05/2022 (SA c/l)	1,264.410	1,241.410	1,497.630	1,514.030	1,446.128
UNIT OVER/(UNDER) RECOVERY - 27/05/2022 (SA c/l)	(347.432)	(316.473)	(68.236)	(63.535)	(145.719)
AVERAGE BASIC FUEL PRICE 27/05/2022 - 27/05/2022	1,611.842	1,557.883	1,565.866	1,577.565	1,591.847
AVERAGE UNIT OVER/(UNDER) RECOVERY 27/05/2022 - 27/05/2022	(347.432)	(316.473)	(68.236)	(63.535)	(145.719)

ANALYSIS MOVEMENT OF AVERAGE OVER/(UNDER) RECOVERY

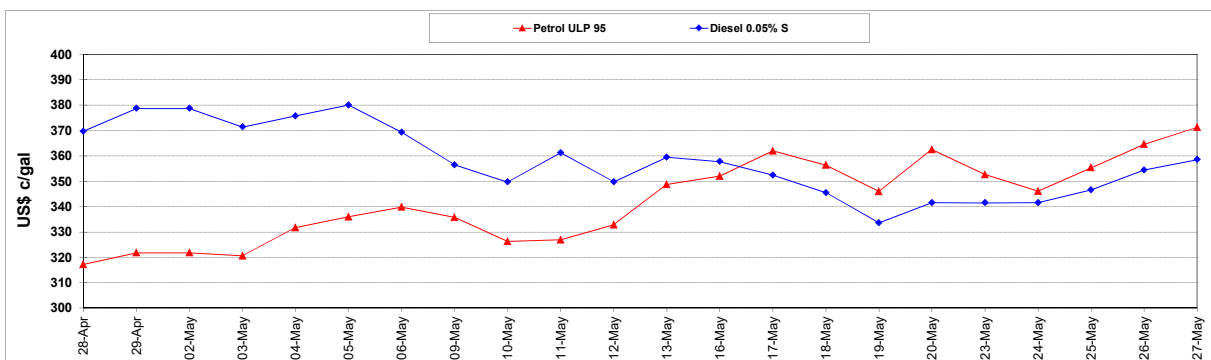
	PETROL 95	PETROL 93	DIESEL 0.05%	DIESEL 0.005%	ILL. PAR.
- MOVEMENT IN INTERNATIONAL PRODUCT PRICES	(375.984)	(344.069)	(95.973)	(91.479)	(173.916)
- MOVEMENT IN EXCHANGE RATE	28.552	27.596	27.737	27.944	28.197
AVERAGE UNIT OVER/(UNDER) RECOVERY 27/05/2022 - 27/05/2022	(347.432)	(316.473)	(68.236)	(63.535)	(145.719)

R/\$ EXCHANGE RATE - (R/\$15.6715 - 27/05/2022)

EXCHANGE RATE USED IN BASIC FUEL PRICE



INTERNATIONAL PRODUCT PRICES OF BASKET USED IN BASIC FUEL PRICE



BASIC FUEL PRICE IN SA CENTS PER LITRE

